



GMT MONTHLY MEMBERSHIP PROGRESS REPORT

Results as of: 5/31/2020

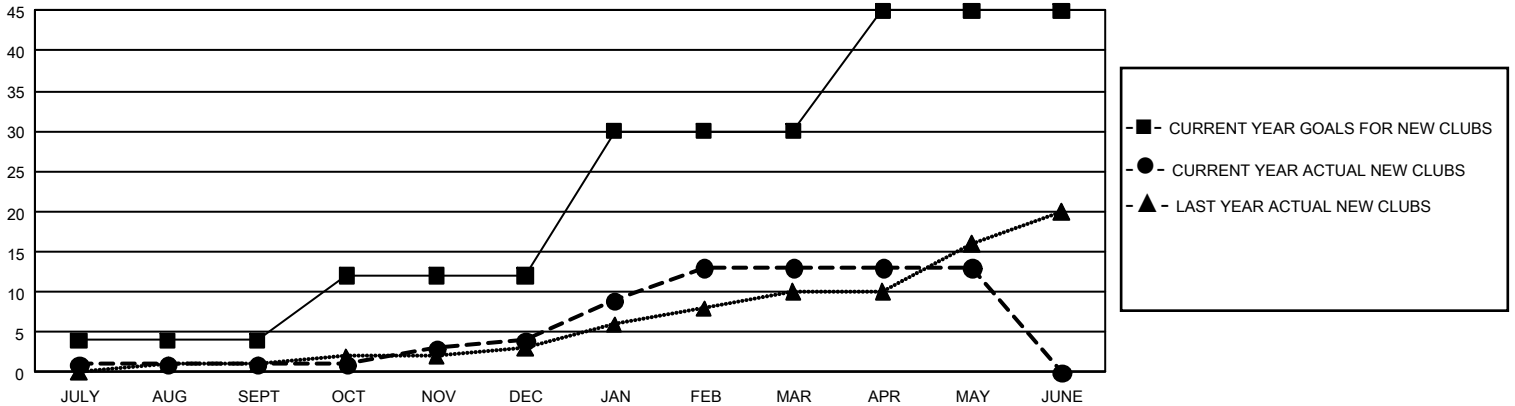
GMT Constitutional Area 4, Group E

GMT: OPEN

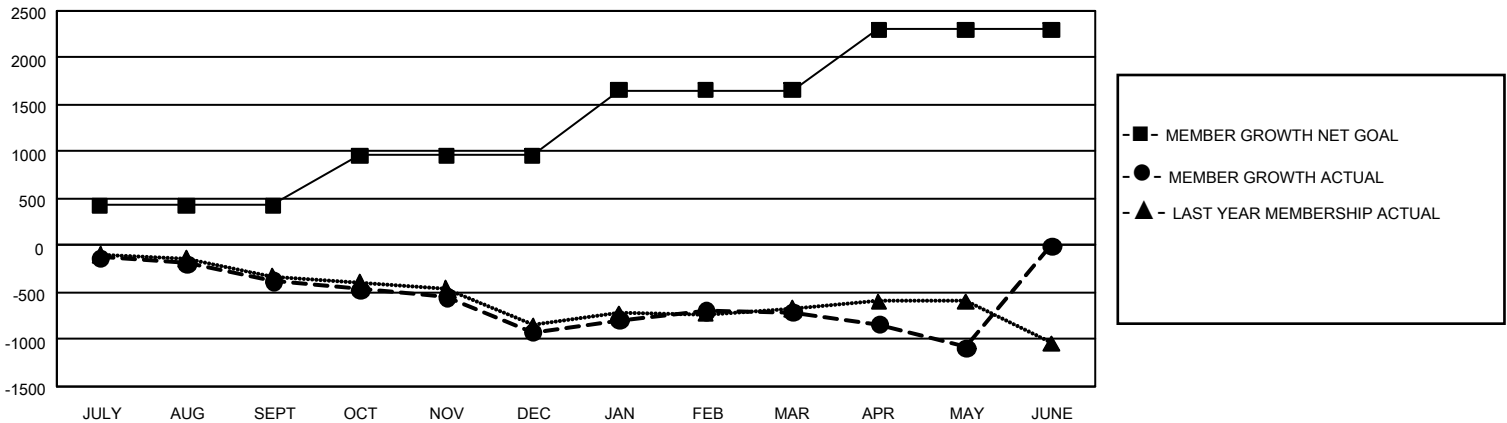
REPORT DOES NOT INCLUDE CLUBS IN UNDISTRICTED AREAS.

Clubs				Members			
RESULTS FOR 2019-2020				RESULTS FOR 2019-2020			
QUARTER	NEW CLUB GOAL	NEW CLUBS	DROPPED CLUBS	QUARTER	MEMBER GROWTH NET GOAL	MEMBER GROWTH ACTUAL	DROPPED MEMBERS ACTUAL (including transfers)
JULY/AUG/SEPT	12	1	11	JULY/AUG/SEPT	1,284	530	796
OCT/NOV/DEC	24	3	7	OCT/NOV/DEC	1,599	678	1,094
JAN/FEB/MAR	54	9	6	JAN/FEB/MAR	2,079	1,010	676
APR/MAY/JUNE	45	0	0	APR/MAY/JUNE	1,935	199	528

GOALS AND ACTUAL NEW CLUBS CUMULATIVE



GOALS AND ACTUAL MEMBERS CUMULATIVE



DROPPED CLUBS: 24	887 CLUBS OF 1,786 ADDED 1 OR MORE NEW MEMBERS	<u>GENDER DISTRIBUTION</u> MALE 29,858 (75.84%) FEMALE 9,511 (24.16%)
<u>DROPPED MEMBERS</u> DECEASED 408 CLUB CANCELLED 37 OTHER 2,648 <hr/> TOTAL 3,093	CLICK HERE FOR CUMULATIVE MEMBERSHIP DATA	TOTAL FAMILY UNIT MEMBERS 1,325 FAMILY MEMBERS PAYING HALF DUES 672